



MITYBILT PRODUCTS &
FIRST NATION SCHOOLS

MITYBILT

MityBilt is an established business with over 25 years of manufacturing experience, and is known as a company that is dedicated to both its current and future clients. Our aim is to provide the highest quality customer service exceeding the industry expectations. MityBilt's steady growth over the past years has come with a reputation of a high quality product, a hardworking team and customer satisfaction.

We deal in both the Institutional and Office settings; including libraries, colleges, halls, sports facilities and other areas that call for 'hard-working' furniture. Our experienced sales staff will work closely with you ensuring that you receive the most appropriate furniture for your environment. Through our long term relationships with our clients, we have a clear understanding of your expectations and requests.

MITYBILT PRODUCTS & FIRST NATION SCHOOLS

MityBilt Products Inc. was started 25 years ago by a visionary who realized that educational furniture was not meeting the requirements of First Nation communities. MityBilt Products designed a range of educational furniture that incorporated benefits that has made it the choice of First Nation schools across Canada. Our First Nation customer values are still embodied in the contemporary and durable furniture for today's 21st Century Classroom furniture.

MityBilt Products included both colour and shape into their furniture knowing the importance these features to our First Nation customers. MityBilt provides a wide choice of colours and shapes for both soft and hard furnishings.

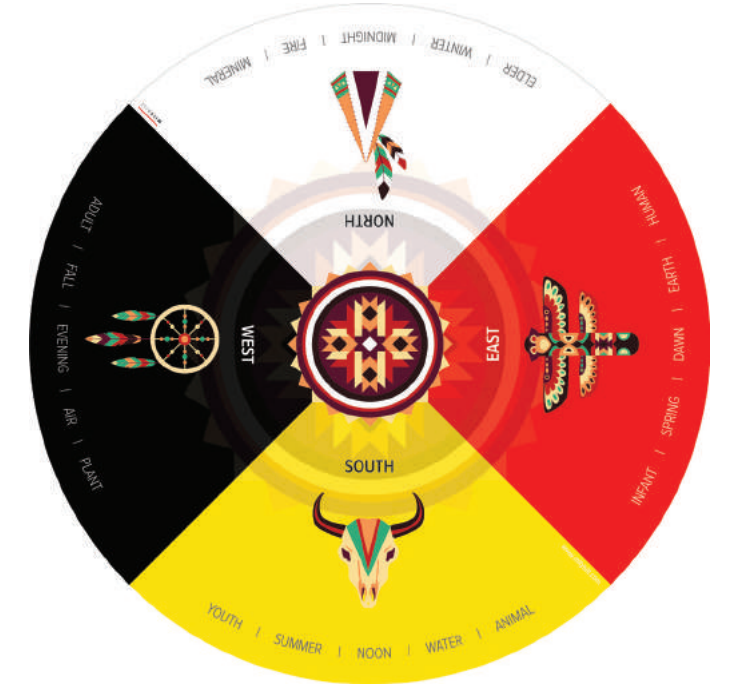
THE MEDICINE WHEEL, has been used by generations of various Native American tribes for health and healing. It embodies the Four Directions, as well as Father Sky, Mother Earth, and Spirit Tree, all of which symbolize dimensions of health and the cycles of life.



THE MEDICINE WHEEL TABLE

Different tribes interpret the Medicine Wheel differently. Each of the 4 Directions (North, East, South & West) is typically represented by a distinctive color, such as white, red, yellow, and black, which for some stands for the human races.

The Medicine Wheel Table is an exclusive product by MityBilt that conforms to MityBilt Standards like 3mm Viny bonded edge, Chewing gum resistant backing, a high density particle board and a high pressure laminate.



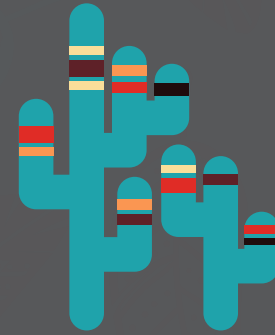
Graphic Medicine Wheel

Part Number: E48RMW Size (in.): 48DIA



SUPER DURABLE FURNITURE & COLLABORATIVE TABLES

The concept of collaborative learning, the grouping and pairing of students for the purpose of achieving an academic goal, has been widely researched and advocated. The term “collaborative learning” refers to an instruction method in which students at various performance levels work together in small groups toward a common goal. The students are responsible for one another’s learning as well as their own. Thus, the success of one student helps other students to be successful. The active exchange of ideas within small groups not only increases interest among the participants but also promotes critical thinking.



CLASSIC TABLE

Canada’s Toughest Table... Serious. When it comes to rugged durability the Classic table stands alone, offering exceptional strengths that an industrious environment demands. We created the Classic the obvious way... first we listened to you, then we designed ours. **CLASSIC.**

Top

- 1" thick 45lb high density particle board
- High pressure scratch resistant laminate
- Chewing gum resistant table backing
- 3mm vinyl bonded edge-band
- Rounded corners for safety

Legs

- 16 gauge 2" diameter steel tube
- 16 gauge 1.25" square legs
- Fully welded construction
- Fixed 29.5" high
- Adjustable floor glide
- Durable powder coat finish

RTA Frame

- 16 gauge 2"x 1" steel tube
- Engineered corner bracket with bolt on leg

Options

- Adjustable height legs 17-25" or 22-30"
- Locking swivel castors
- Refer colors and finishes page

120" Medicine Wheel

Part Number: E120CRESMED Size (in.): 120DIA



96" Medicine Wheel

Part Number: E48RMW Size (in.): 48DIA



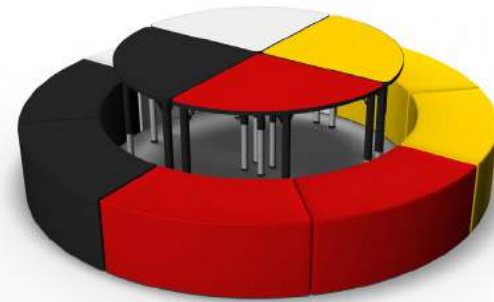
72" Medicine Wheel

Part Number: E72MED Size (in.): 72DIA



96" Medicine Wheel + Ottomans

Part Number: E96MED + JSMED.18 Size (in.): 96DIA



CLASSIC RECTANGLE

CLASSIC ROUND

CLASSIC 180

CLASSIC TRAPEZOID



ERGONOMIC SEATING

Many of us spend a significant part of our lives sitting down, whether at school, college, in the office, working in a shop or other seated activities. Most of us spend our seated time sitting in a way that can lead to stiffness, a sore neck and, in some cases – especially those of young children – back problems that can stay with us for the rest of our lives. Many of these problems can be linked to poor posture in the form of rounded shoulders, a cramped stomach and constant twisting of the trunk. From its inception, the MityBilt Ergo furniture range has been designed to promote good posture. The design principles have been endorsed by leading surgeons, educationalists and ergonomists from around the world.

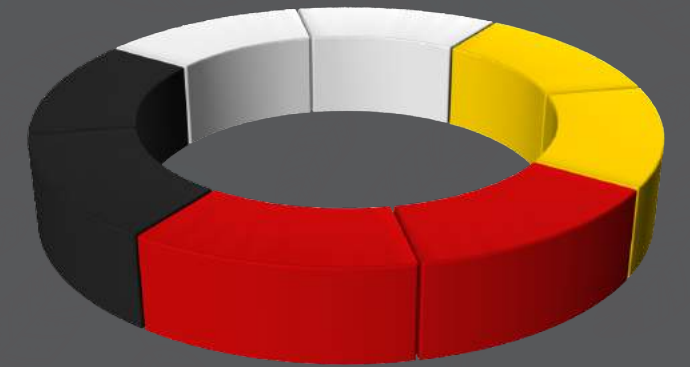


RAVE CHAIR

With a pleasing design, flexible backrest and lumbar curvature, the ergonomic design of the RAVE chair has addressed this challenge through providing four different seating positions; Forward-facing, Rear-facing or by sitting over the left or right side of the chair. This freedom of posture allows your students to remain in a healthy and comfortable seated position throughout the day.

SOFT SEATING

Juice seating can be combined to produce multiple sitting environments, ideal for informal group study and a sure way to bring life and vitality to any space! The structure is lightweight yet strong, combining a wooden frame with resilient foams and fabrics.

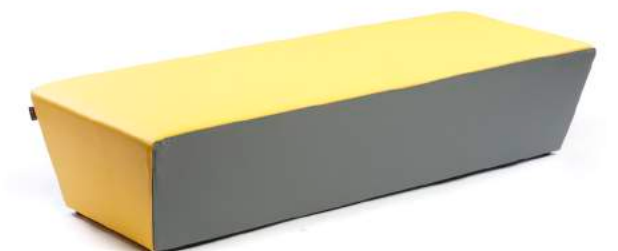
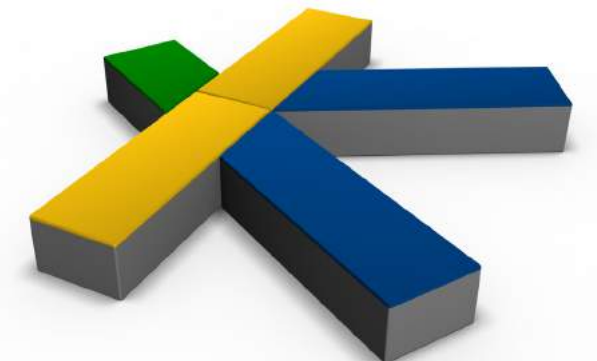
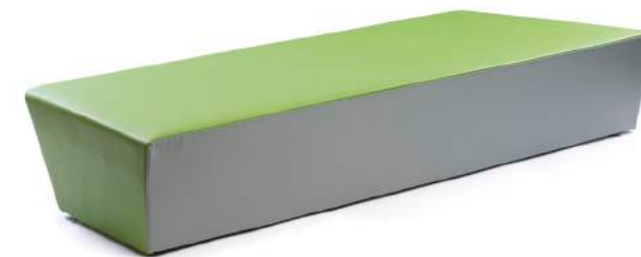


Medicine Wheel Ottomans
Part Number: JSMED.18 Height (in.): 18

JUICE INUK

The Inuk consists of 5 individual ottomans that can be used together to create the shape of an Inukshuk. The vibrant colors represent nature and are a sure way to bring life and vitality to your space!

Juice Inuk
Part Number: JSINUK.18 Height (in.): 18



HIVE

The Hive Floor Cushion allows students to sit comfortably and causally on the floor. Multiple cushions can also be stacked onto the mobile base for storage or for use as a cushioned mobile stool. The Hive series is 4" thick & 24" wide hexagon shape floor cushion designed to help younger students stay comfortable on the floor.



Hive Floor Cushions

Part Number: HSFC Height (in.): 4 Width (in.): 24



ULTIMA STOOL

Unbeatable in quality, the ULTIMA has proven itself time and time again in tough circumstances and can honestly be described as **'OVERBUILT!'** Its heavy duty, all-welded construction and shatter-proof seat gives you the rugged endurance you deserve. Some features include seat backing steel plate for additional strength, Fully welded frame & Non-slip rubber grip floor glide.



ULTIMA ADJUSTABLE





FIRST NATIONS LEARNING CENTRE



Greenguard **Gold Certified**

All MityBilt tables and desks conform with the most stringent indoor air quality standards by exceeding the obligations of GreenGuard Gold environmental requirements.



Limited **Lifetime Warranty**

MityBilt is known for best-in-class educational furniture and has built a reputation of engineered products that exceed consumer expectations for quality and durability. For your peace of mind, MityBilt offers a limited lifetime warranty on all products.



Made in **Canada**

Canadian owned and operated. With the wealth and resources available in Canada, all MityBilt products are manufactured using high quality Canadian raw materials.



MITYBILT

PO Box 1158 | 20 Limestone Bay

Stonewall MB R0C 2Z0, Canada

P. 866.282.7243 | www.mitybilt.com